



THE PINNACLE OF  
HARMONY



An aerial photograph of a modern apartment complex. The image shows several high-rise buildings with glass and concrete facades. In the center, there is a large, rectangular swimming pool with a blue tiled bottom and a small circular feature. The pool is surrounded by lush green landscaping, including trees and shrubs. A paved walkway leads from the pool towards the buildings. In the background, a road with a blue-roofed building and some parked vehicles is visible. The overall scene is bright and sunny, suggesting a clear day.

READY  
to MOVE - IN





# VISION

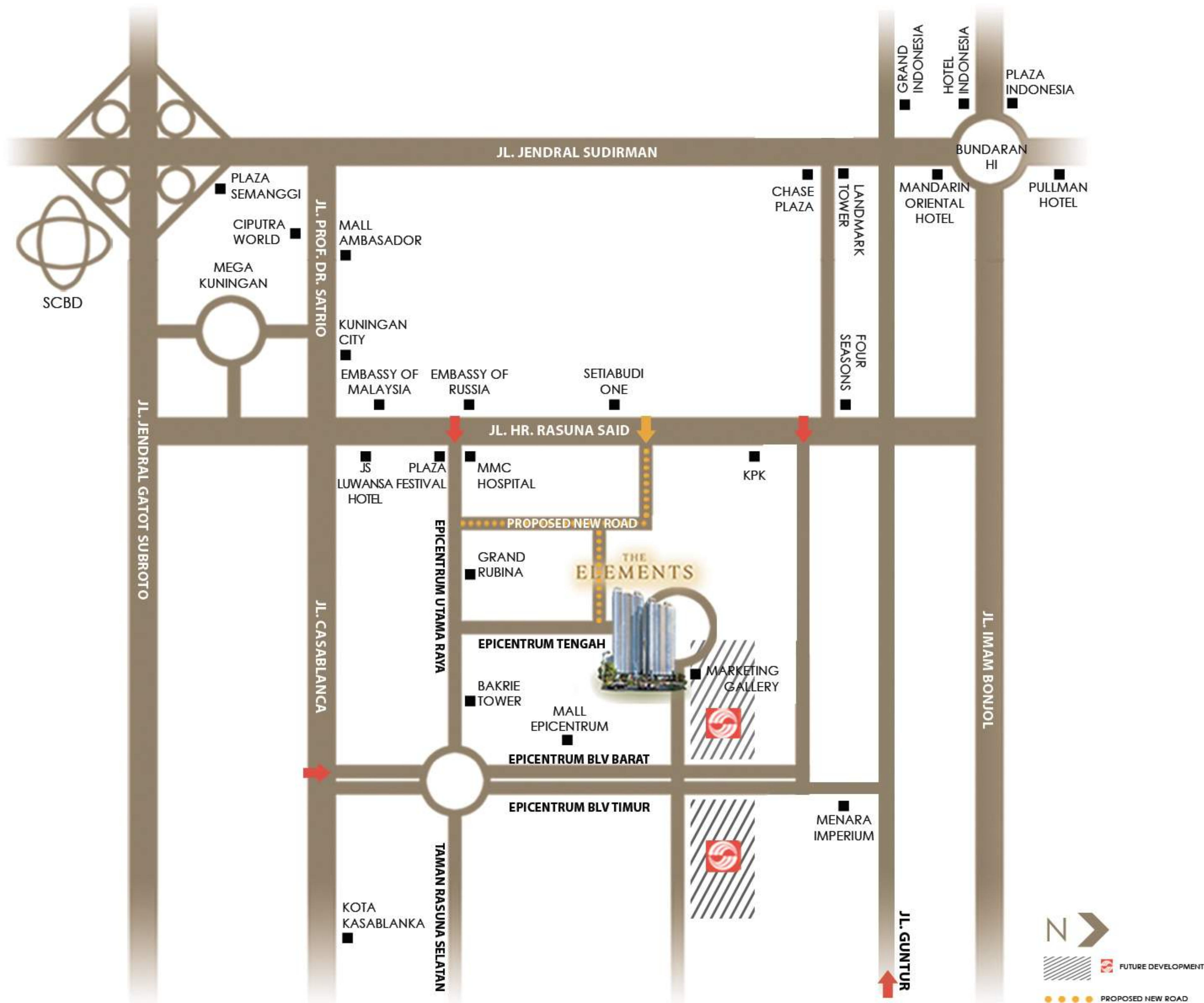
OF PERFECTION

THE ELEMENTS UNDERSTANDS  
THAT NOTHING REPLACES  
THE COMFORTING SENSE OF  
ARRIVING HOME.

A distinguished residential  
development standing amidst the  
strategic golden triangle & combines  
elegant design with plush living  
facilities and great connectivity.  
Creating the truest sense of arrival and  
timeless, modern luxury living.







# AN ULTIMATE ADDRESS FOR THE FORTUNATE FEW

Set on the burgeoning Epicentrum area in the heart of Jakarta, The Elements presents the opportunity to live in one of the capital's most prestigious locations. Its residents can enjoy the finest retail, business and lifestyle options the city has to offer, right at their very doorstep.



FUTURE DEVELOPMENT

PROPOSED NEW ROAD



# WELCOMING

Beyond its soulful design, an unwavering  
commitment to attention-to-detail and  
an unrelenting focus on genuine luxury  
further establishes The Elements' prominence  
and prestige.







## A TOUCH OF ELEGANCE

Intended for the ultimate living experience,  
The Elements offers its residents the distinct  
luxury of space.

Luxuriously fitted and finished, these homes are  
ideal for those who seek expansive, strategic and  
impeccably planned homes to call their own.





AND

RELAX,  
REJUVENATE  
RECONNECT







EVERY  
COMFORT  
CONSIDERED

Completing The Elements' experience, our first class facilities and amenities guarantee that residents have the luxury of convenience with great in-house leisure options, other retail, and lifestyle options just a stone's throw away.





# REACH FOR THE FUTURE

Providing not only luxurious space and furnished with first class amenities, that will enhance investment value in the heart of Jakarta's most vibrant area, The Elements will set a new benchmark for urban luxury living.





# **sinar mas land**

**Building** for a better **future**

Innovators in design and development, Sinar Mas land is the largest and most diversified property developer in Indonesia. With a culture of excellence, the company continues to commit to presenting cutting edge projects in city development, townships, residential, commercial and industrial estates across the region.



Sinar Mas Land Indonesia operation owns over 10,000 hectares of strategic land bank and operate stand out properties such as the Grand Hyatt, Plaza Indonesia, Sinar Mas Land Plaza (Jakarta) and other prime retail and residential projects in Singapore, Malaysia, China, London and many more strategically spread out within Southeast Asia and beyond.





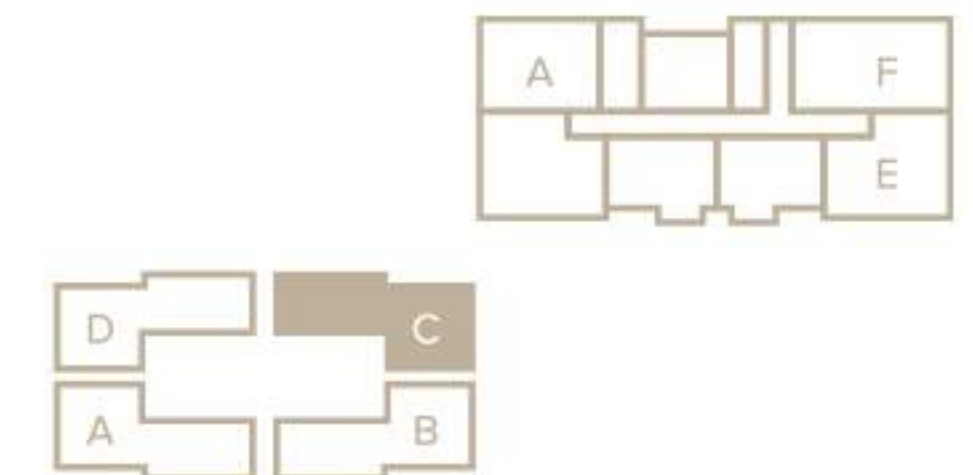
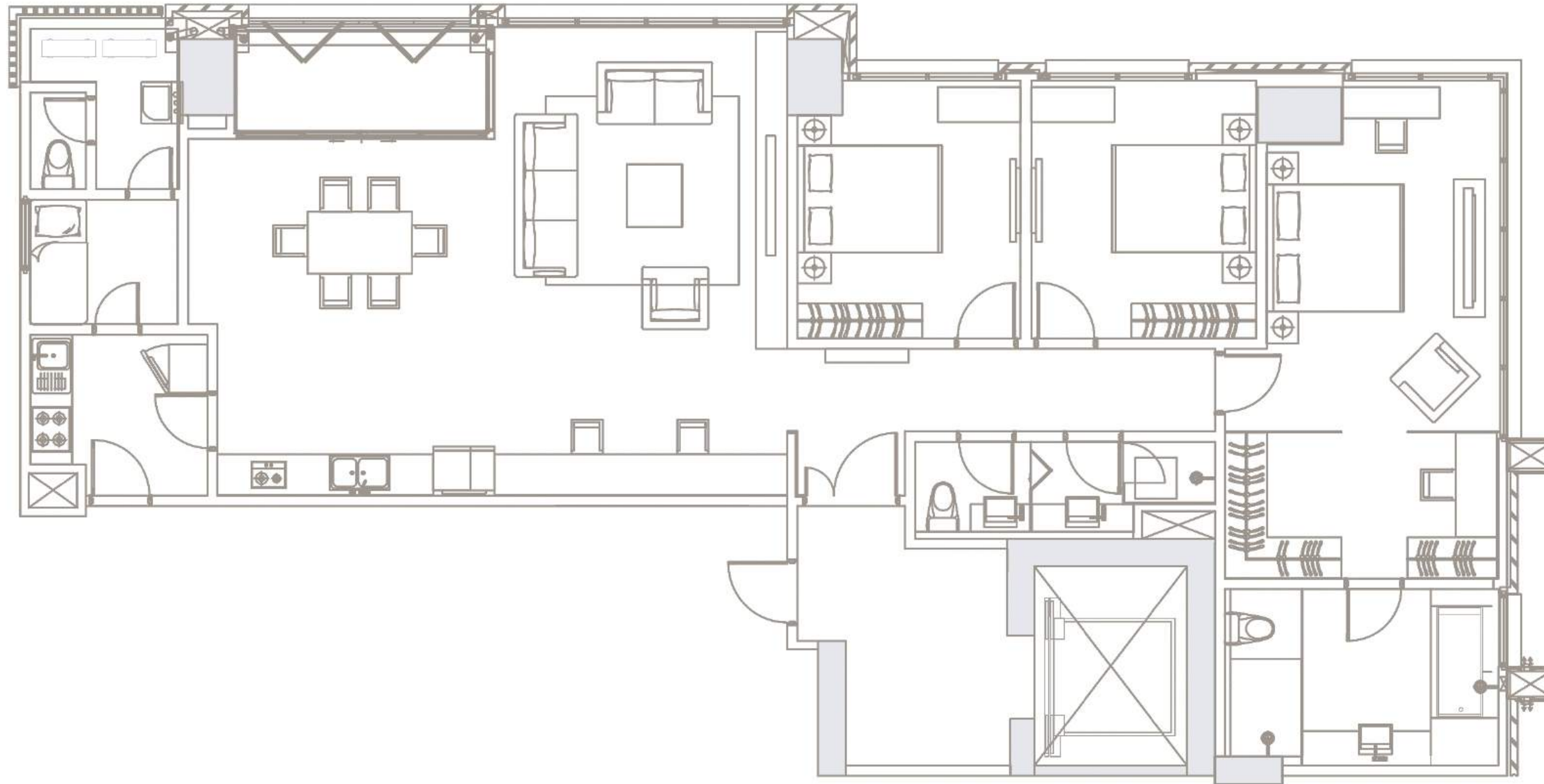
# SITEPLAN





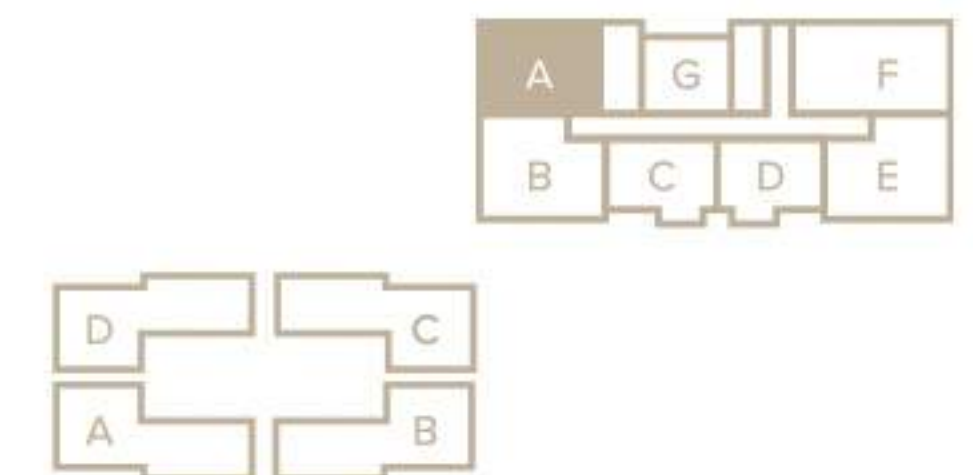
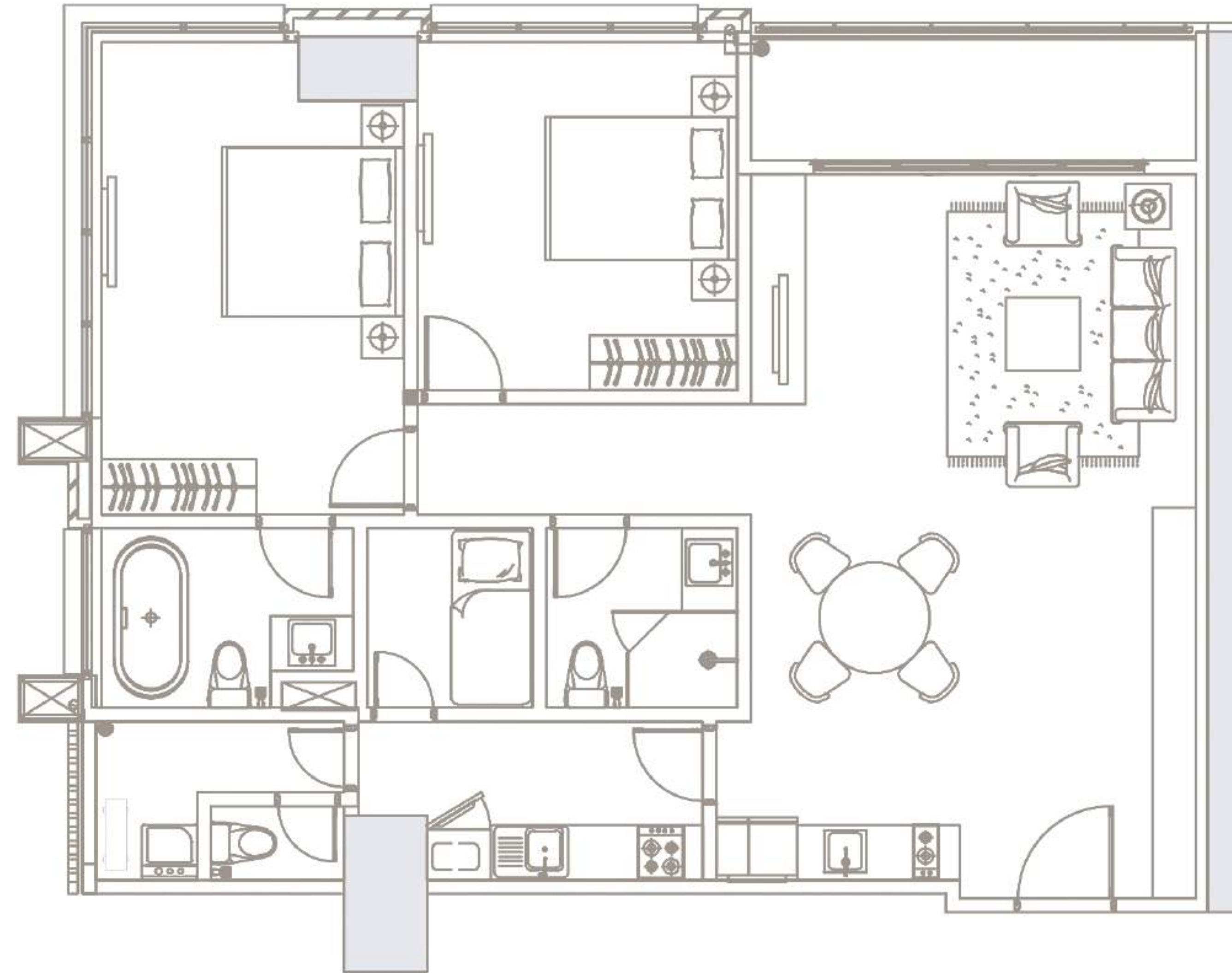
NETT AREA 148 m<sup>2</sup>

3 BR

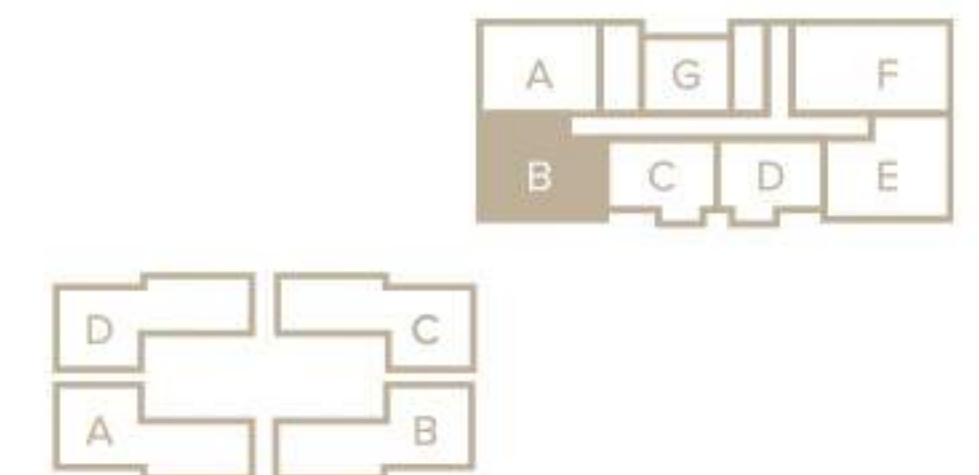
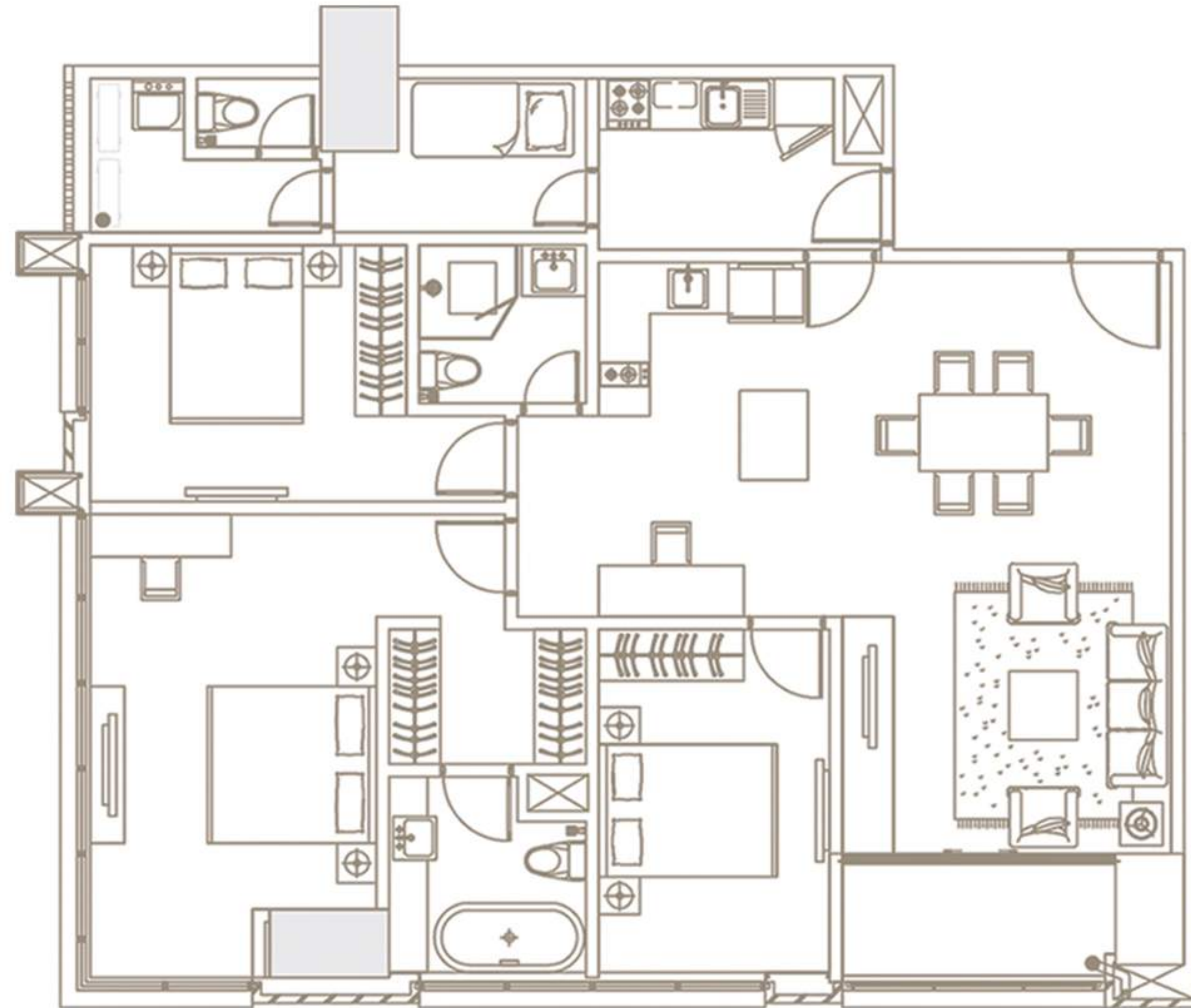


DISCLAIMER • Whilst every reasonable care has been taken in preparing this brochure and constructing the model, sales gallery and showflats, the developer and its agent(s) shall not be held responsible for any inaccuracies and omissions. All statements are believed to be correct but shall not be regarded as statements or representation of fact. Visual representation including models, drawings, illustrations, photographs and art renderings are artist's impression only and are not to be regarded as representation of fact. Floor areas and other measurements are approximate only and are subject to final survey. All information, plans and specification are current at the time of print and are subject to changes as may be required by the relevant authorities and cannot form part of the contract. The Sale & Purchase Agreement shall form the entire agreement between the developer and the purchaser, and shall in no way be modified by any statements or representations whether contained in this brochure or given by the developer's agents or otherwise.

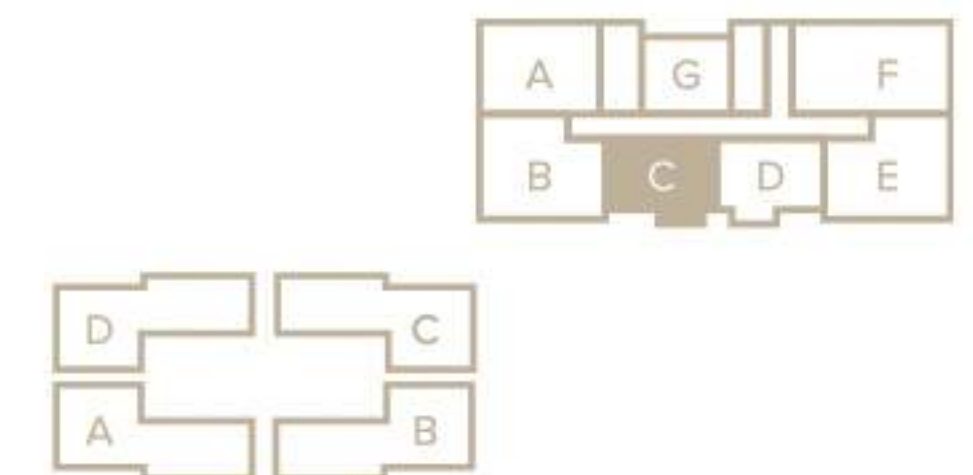
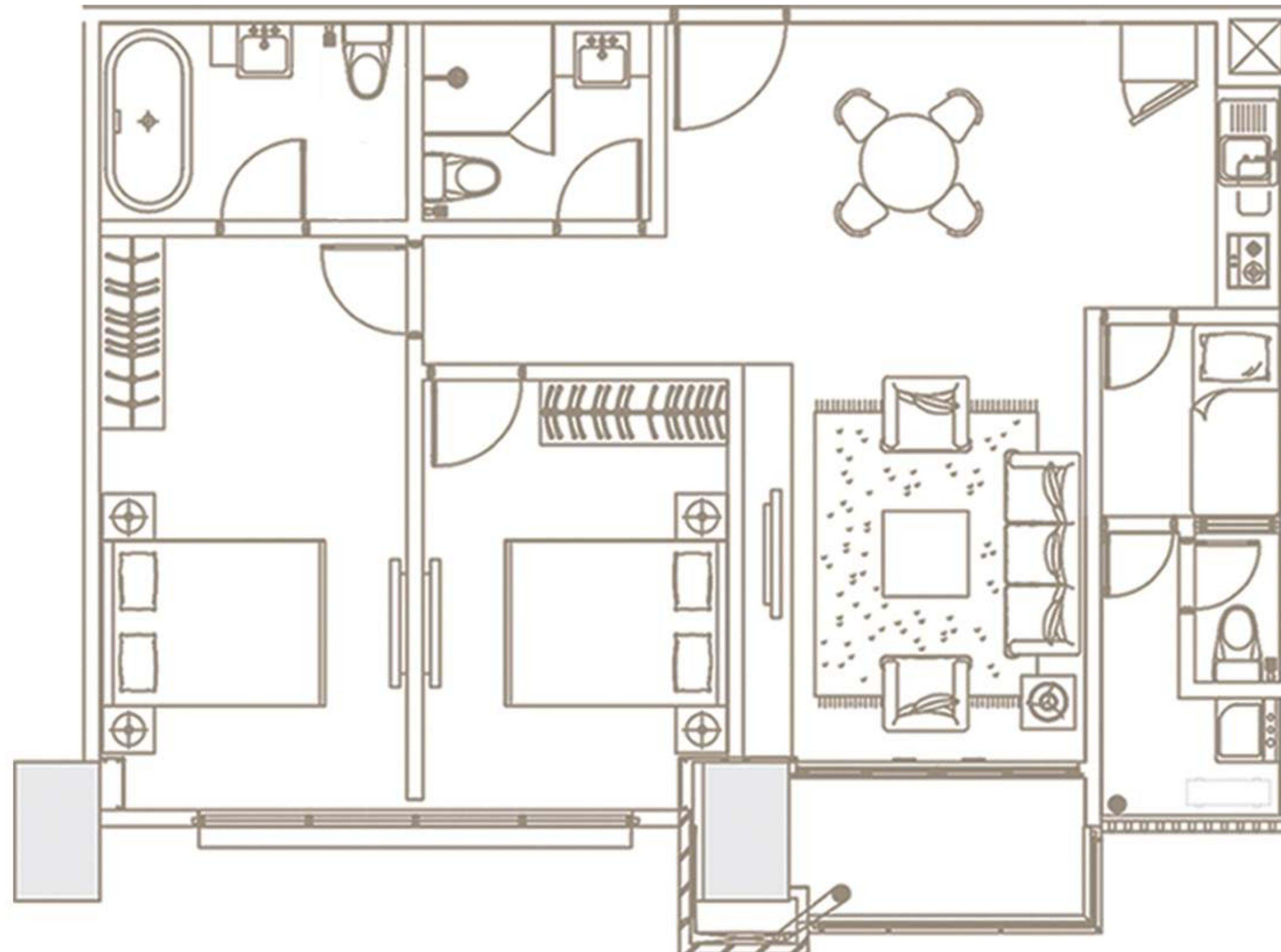




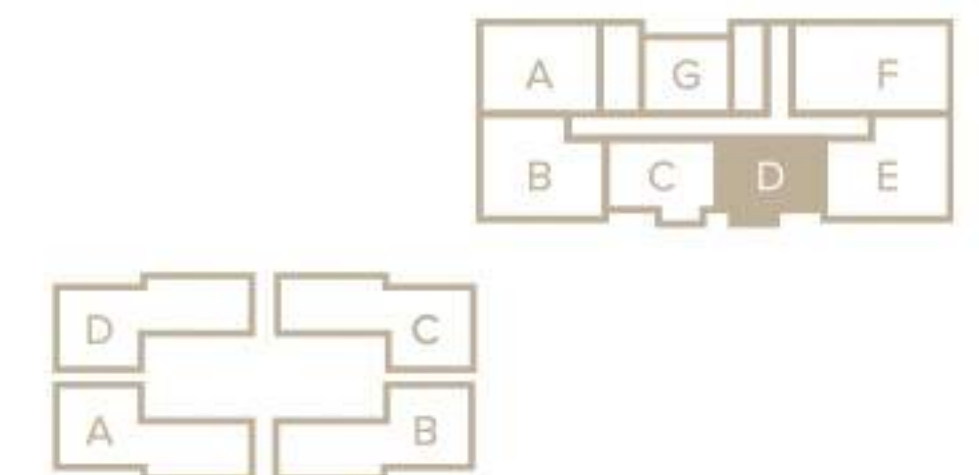
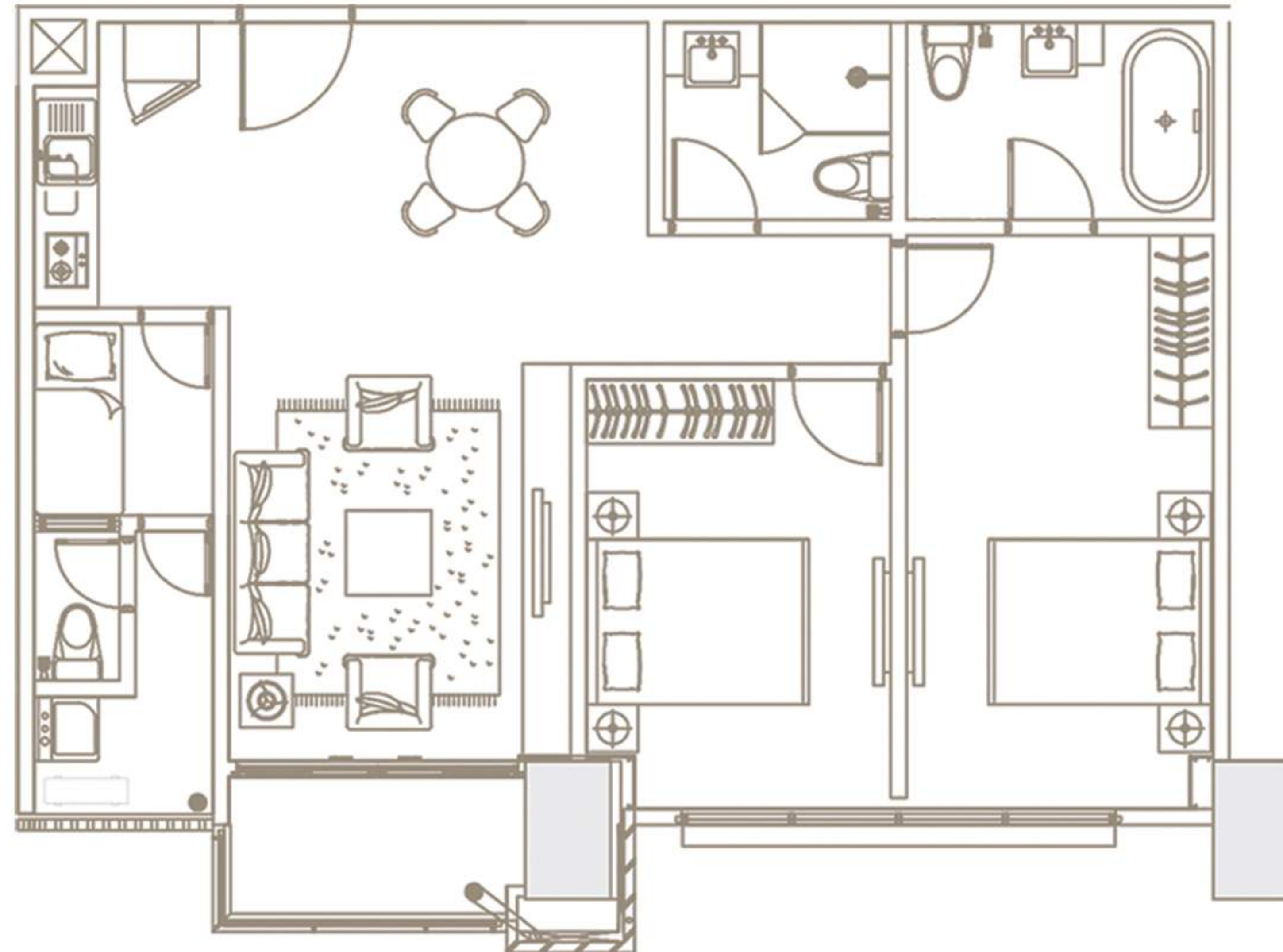




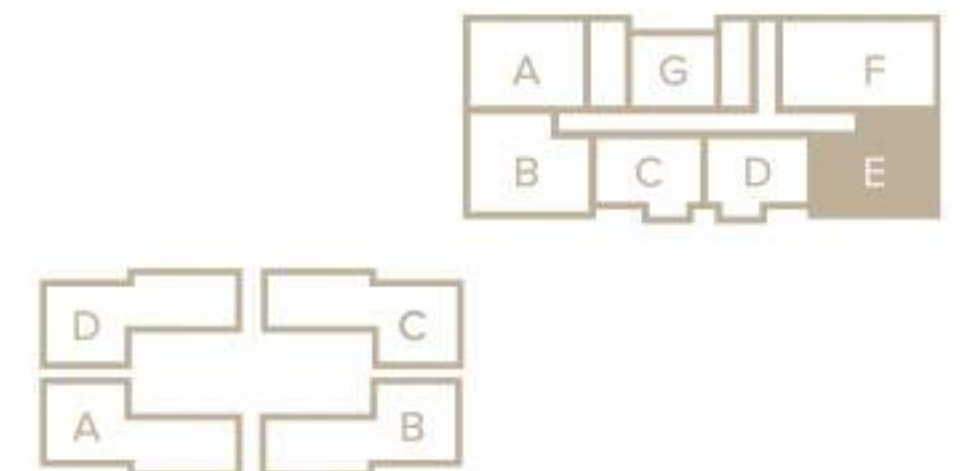
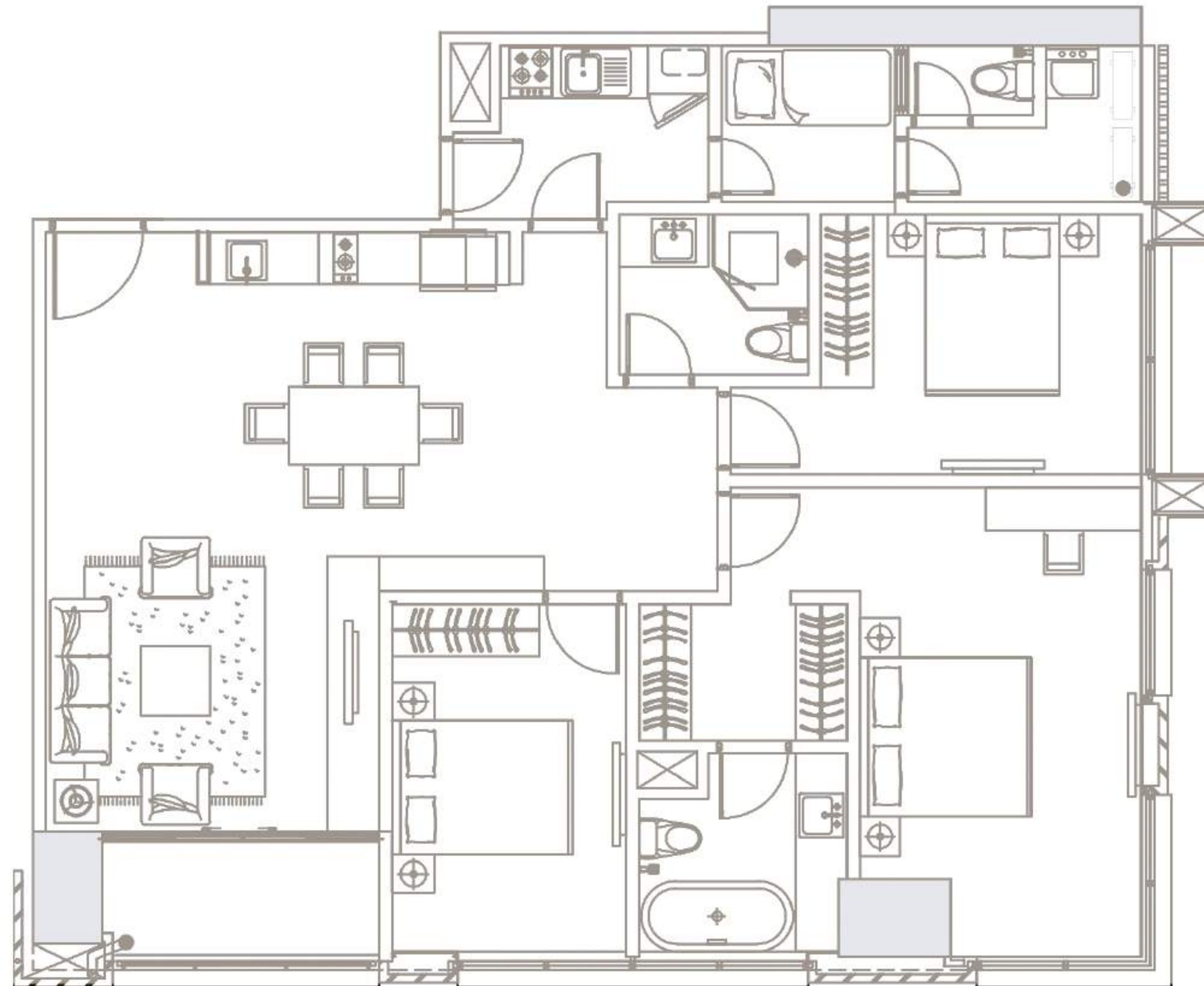






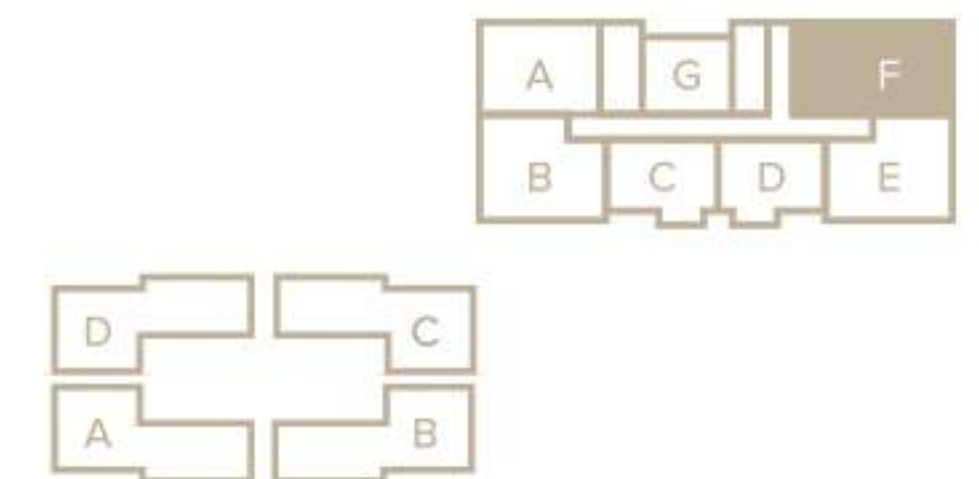
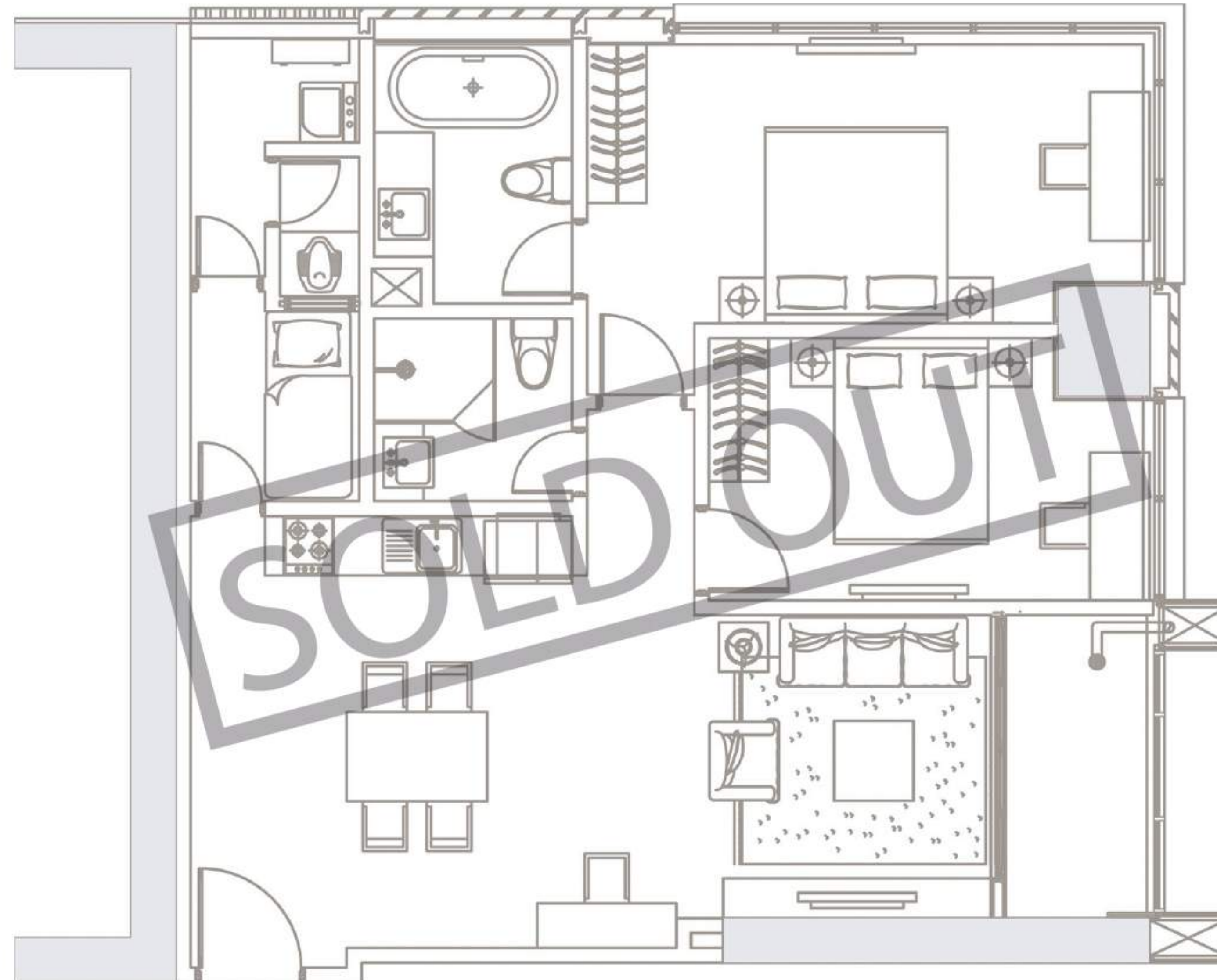






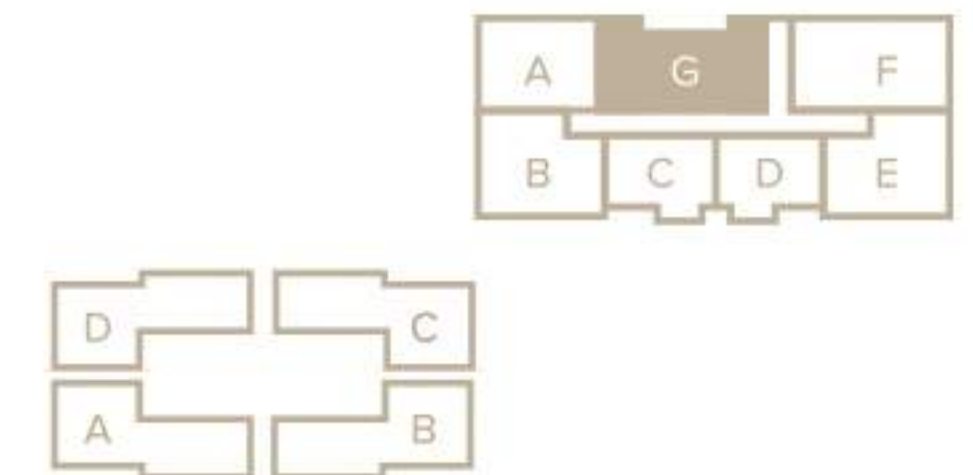
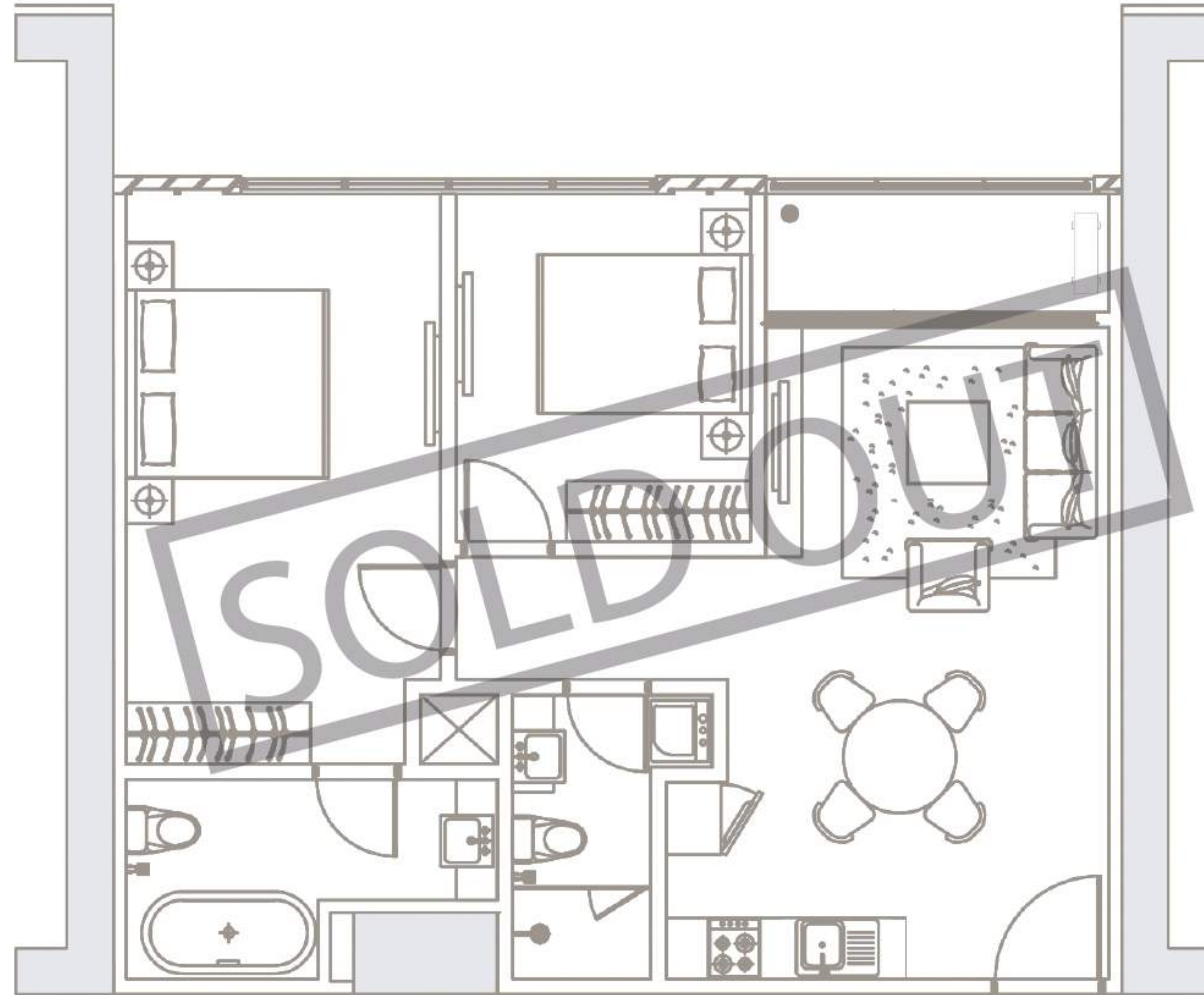


NETT AREA 85 m<sup>2</sup>  
2 BR+



DISCLAIMER • Whilst every reasonable care has been taken in preparing this brochure and constructing the model, sales gallery and showflats, the developer and its agent(s) shall not be held responsible for any inaccuracies and omissions. All statements are believed to be correct but shall not be regarded as statements or representation of fact. Visual representation including models, drawings, illustrations, photographs and art renderings are artist's impression only and are not to be regarded as representation of fact. Floor areas and other measurements are approximate only and are subject to final survey. All information, plans and specification are current at the time of print and are subject to changes as may be required by the relevant authorities and cannot form part of the contract. The Sale & Purchase Agreement shall form the entire agreement between the developer and the purchaser, and shall in no way be modified by any statements or representations whether contained in this brochure or given by the developer's agents or otherwise.









SEE OUR

 **3BR**

UNIT IN 360

See The Elements' luxurious 3 Bedroom  
Unit in 360 by [click the image](#)



A modern living room interior. On the left, a white console with a black metal frame holds two small framed pictures. In the center, a large flat-screen TV is mounted on a wall with a light-colored, veined marble pattern. Below the TV is a long, white, low-profile cabinet with multiple drawers and doors. To the right of the TV, a yellow armchair with a dark metal frame is positioned. In the foreground, a large beige sofa is partially visible. A dark, round coffee table with a black metal frame sits in the center. The floor is a light-colored tile, and a dark, textured rug is placed under the coffee table. The ceiling has recessed lighting. The overall color scheme is neutral with warm tones.

EXPERIENCE OUR

2BR

UNIT VIRTUALLY

See The Elements' luxurious 3 Bedroom  
Unit in 360 by click the image





# UNITS SPECIFICATION

<b>FLOOR</b>	Living and Dining, Dry Kitchen Bedrooms Wet kitchen, Service and maid area, Maid Bathrooms, Balcony	Imported marble High density laminate flooring Homogeneous tile	<b>WARDROBE</b>	Built in all Bedrooms*
			<b>VANITY</b>	Built in all Bathrooms*
<b>CEILING</b>	Living and Dining, Bedrooms, Dry Kitchen, Service and maid area Bathrooms, Wet kitchen, Maid Bathrooms	Painted gypsumboard WR gypsum board	<b>OTHER</b>	
<b>WALL</b>	Living and Dining, Bedrooms Bathrooms Service and maid area, Maid Bathrooms	Painted Imported marble Painted		Lighting Safety  Video Communication Water Heater Smoke , Heat and Gas Detector Fire Alarm and Sprinkler Electrical Power Parking Clear Ceiling Height
<b>DOORS</b>	Main Door Bedrooms, Bathrooms, Service and maid area	Solid engineered wood door Engineered wood door		Down light Access card for lift lobby and facilities features
<b>DRY KITCHEN</b>	Appliances  Counter Top Surface	De Dietrich, European Brand : Electric Hob, Hood and Oven Quartz (high quality compact marble)		3BR = 13.200VA   2BR = 10.500VA 1 Lot ± 2.7 m - 3.1 m
<b>WET KITCHEN</b>	Counter Top Surface	Homogeneous tile		
<b>SANITARY</b>	Bathrooms	Toto premium	<b>CONNECTIVITY</b>	1 Network
<b>AC</b>	Living and all Bedrooms*	Split Duct - Mitsubishi		Living room Living room

\*Excluding maid quarters






## MARKETING GALLERY & SHOW UNIT


Jalan Epicentrum Boulevard Barat  
Kawasan Rasuna Epicentrum  
Jakarta 12960, Indonesia




021 **295 800 88**

[www.theelements.co.id](http://www.theelements.co.id)

 The Elements Apartment

 theelementsapartment

 The Elements Apartment

**\*To find out more, click or tap (👉) the links on our website and social media**

---

Member of

